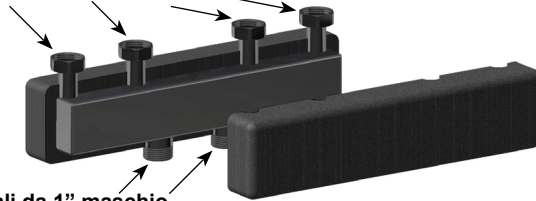




COLLETTORE DI DISTRIBUZIONE ART.2194

Raccordi derivazioni da 1" femmina con calotta mobile

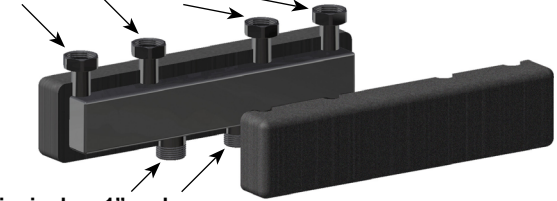


Raccordi principali da 1" maschio



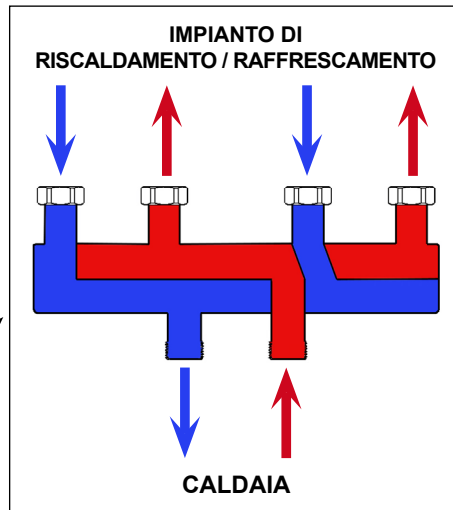
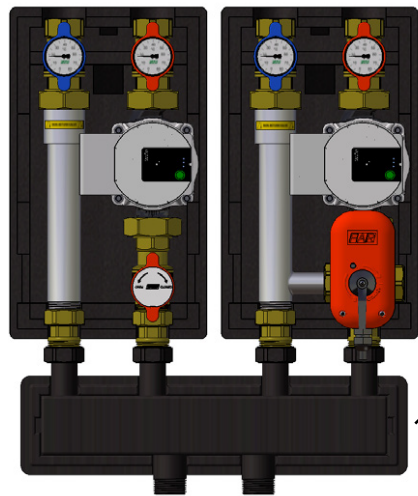
COLLECTEUR DE DISTRIBUTION ART.2194

Raccords des derivations: 1" femelle

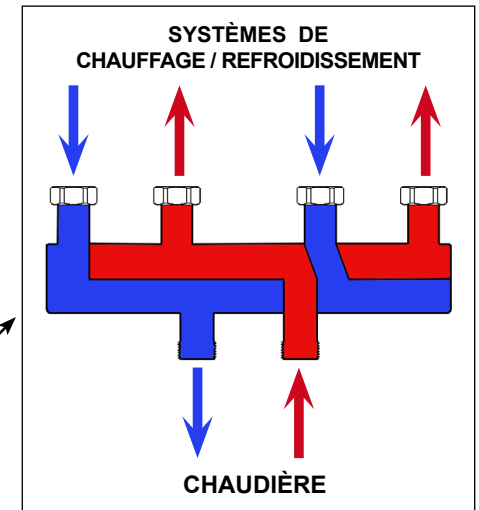
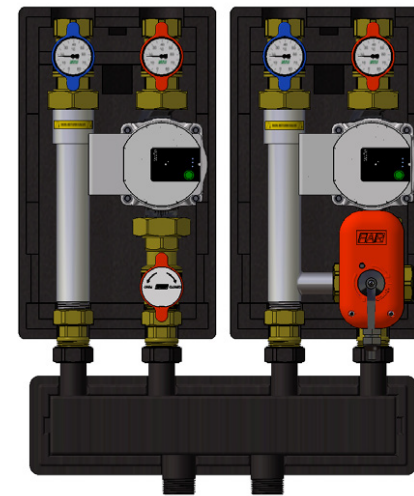


Raccords principales: 1" male

INSTALLAZIONE



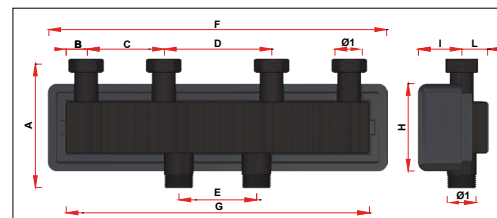
INSTALLATION



CARATTERISTICHE TECNICHE:

Corpo collettore: Acciaio verniciato
 Temperatura di esercizio max: 95°C
 Pressione nominale: 8 bar
 Interasse derivazioni: 90mm
 Guscio di coibentazione: PE

CARATTERISTICHE DIMENSIONALI:

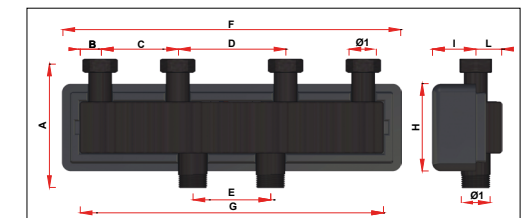


ART. 2194		CODICE	Ø1	A	B	C	D	E	F	G	H	I	L
2194	10290	1"	143	24	90	125	90	393	352	101	50	30	
2194	10390	1"	143	24	90	125	90	607	567	101	50	30	

CARACTÉRISTIQUES TECHNIQUES:

Corps: Acier peint
 Température maximale: 95°C
 Pression nominale: 8 bar
 Entraxe entre les derivations: 90mm
 Coquille d'isolation anticondensation: PE

CARACTERISTIQUES DIMENSIONNELLES:



ART. 2194		RÉF.	Ø1	A	B	C	D	E	F	G	H	I	L
2194	10290	1"	143	24	90	125	90	393	352	101	50	30	
2194	10390	1"	143	24	90	125	90	607	567	101	50	30	